



The proposal:

GIDIFA Housing project 200.000 homes
3 & 4 Bedrooms





Introduction

EGP wants to do more than just show you some renderings of 3&4 Bedroom houses !

The amazing project in the Philippines will need much more detailed attention in order to be on budget, on time and to the highest standard of quality ! For this we are engaging our team of engineers and architects in order to fulfill the requirements.

We have in this presentation an overview of the 3&4 Bedroom houses that we chose as potential designs which are feasible within the budget of 35.000 \$ almost entirely build out of EGP panels for both inner walls and outer wall structures, combined with EGP ceiling/roof and flooring.
This project is based on the first 200.000 housing units.

In this presentation you will see that there are several sizes of homes, they end up at the same budget because the smaller houses will get more landscaping included.

All the houses that we construct with EGP are earthquake proof (until 8 on the richter scale) and fire resistant up to 4 hours !

We are grateful of the opportunity in order to be able to cooperate on this humanitarian project under the grace of Hon. Angel Ferdinand Marcos.

Yours sincerely,

Mohtasim Hussain
Chairman
Effects Investments

The project:

Due to the magnitude and scale of the housing project in the Philipinnes we need to bear in mind diferent factors/parameters which will have large implications in regards to the speed/timeframe of constructing the individual 3&4 bedroom houses.

We also need to bear in mind that we want to make the houses as green as possible and that in every sense of the way, meaning ranging from the insulation ratios up to the usage of solar engery to make the houses entirely self sustainable.

EGP has all the capacities in house in order to make this amazing project work and deliver within the timeframe set fortht.

Now the timeframe will directly impact the magnitude of the laborforce needed to accomplish this entire project.

- Size/dimensions of the 3 & 4 Bedroom houses
- Roof design
- Outside design
- Interior Design
- ...etc

EGP Housing proposal #1



2000 sqft (185 sqm) 3 bed 3 bath 2 storey

EGP Housing proposal #1



EGP Housing proposal #1

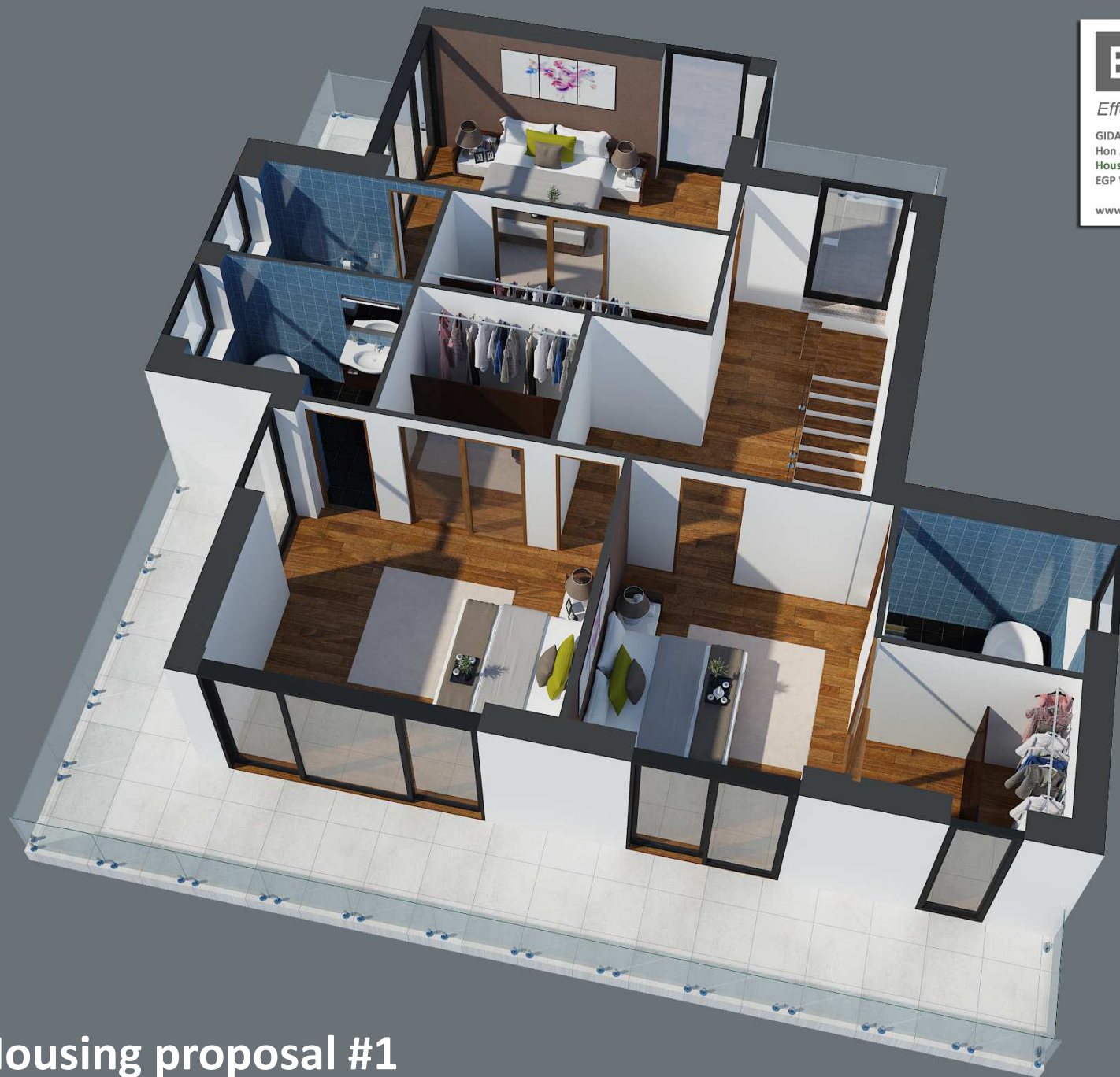


EGP Housing proposal #1



EGP Housing proposal #1





EGP Housing proposal #1



EGP Housing proposal #1





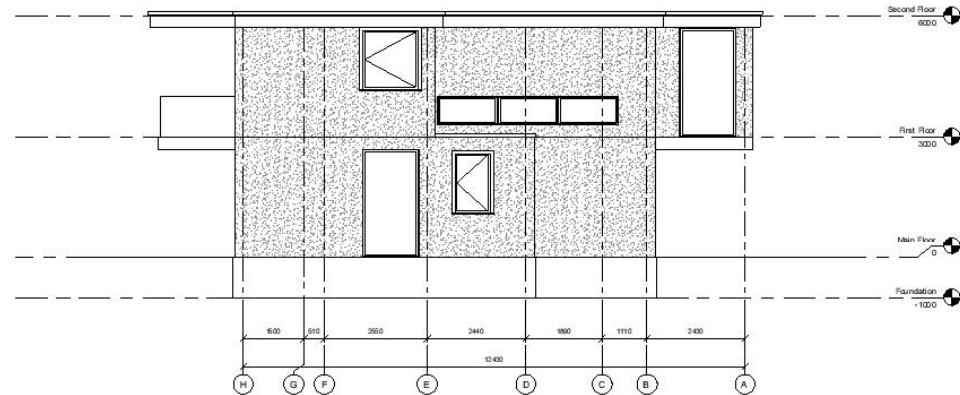
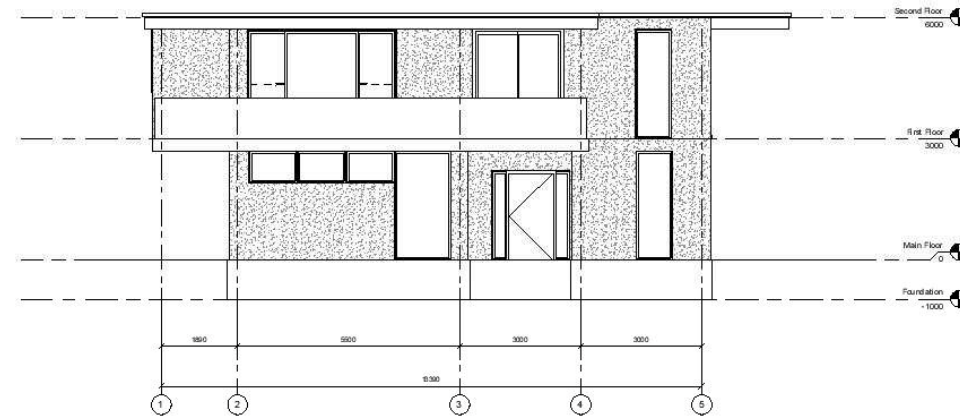
EGP Housing proposal #1





EGP Housing proposal #1

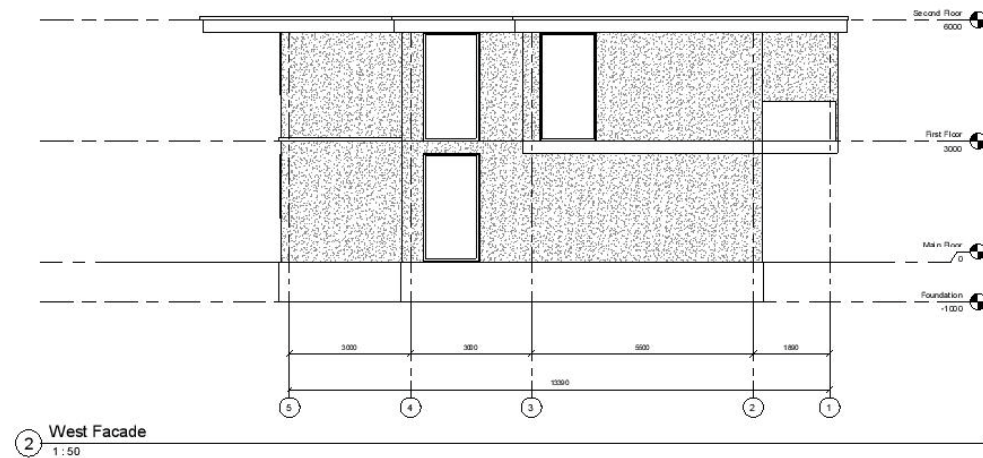
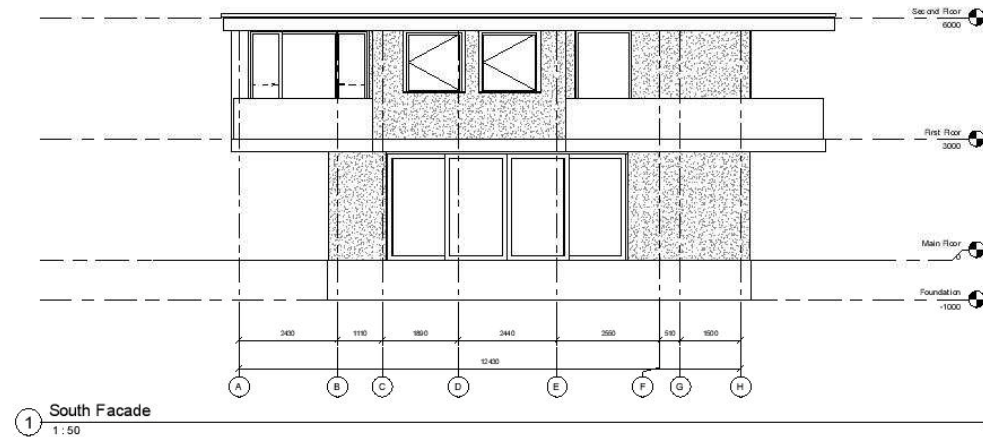




HOUSE #2 GIDIFA PROJECT Hon Angel Ferdinand Marcos
COPYRIGHT 2016 EGPANEL.COM

EASTERN & NORTH FACADES

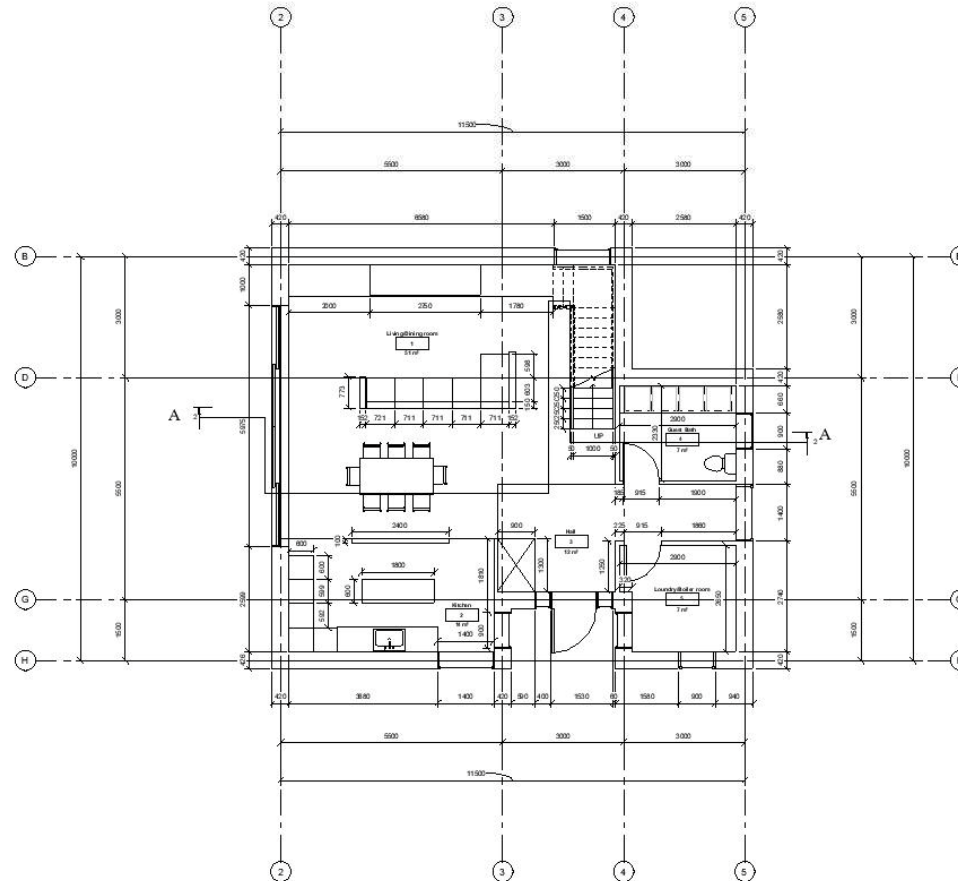
SCALE 1:50 @A1



HOUSE #2 GIDIFA PROJECT Hon Angel Ferdinand Marcos
COPYRIGHT 2016 EGPANEL.COM

SOUTH & WEST FACADES

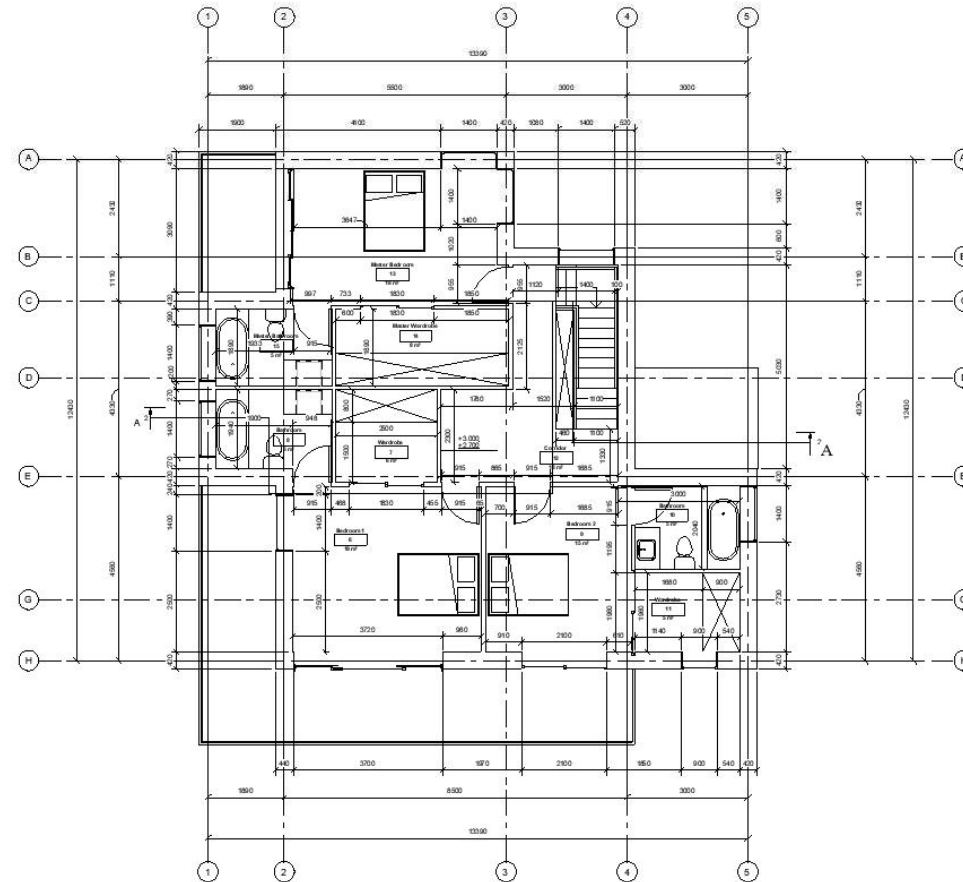
SCALE 1:50 @A1



HOUSE #2 GIDIFA PROJECT Hon Angel Ferdinand Marcos
COPYRIGHT 2016 EGPANEL.COM

MAINFLOOR

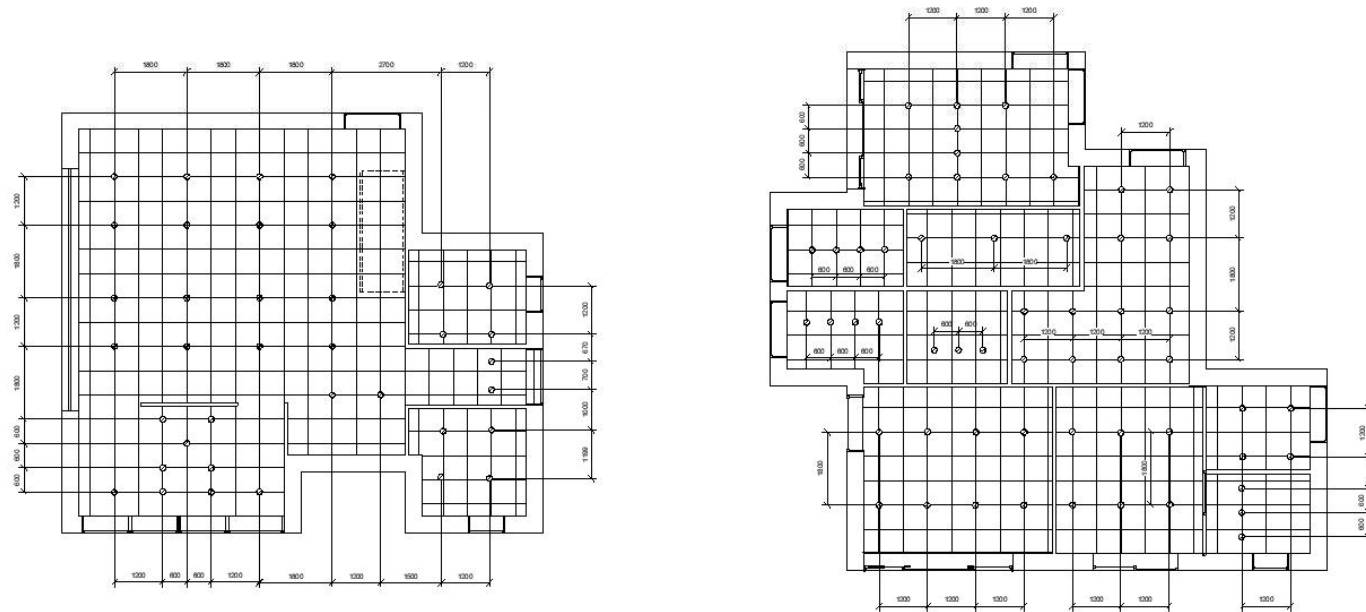
SCALE 1:50 @A1



HOUSE #2 GIDIFA PROJECT Hon Angel Ferdinand Marcos
COPYRIGHT 2016 EGPANEL.COM

FIRST FLOOR

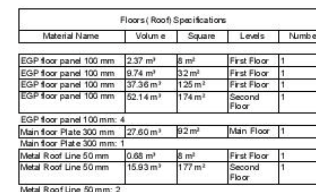
SCALE 1:50 @A1



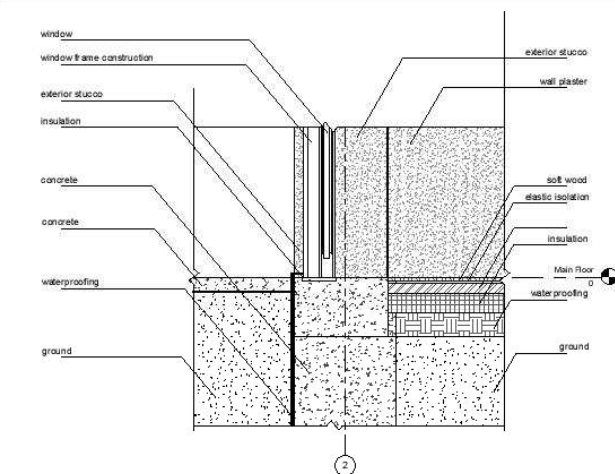
HOUSE #2 GIDIFA PROJECT Hon Angel Ferdinand Marcos
COPYRIGHT 2016 EGPANEL.COM

LIGHTS POSITION MAIN & FIRST FLOORS

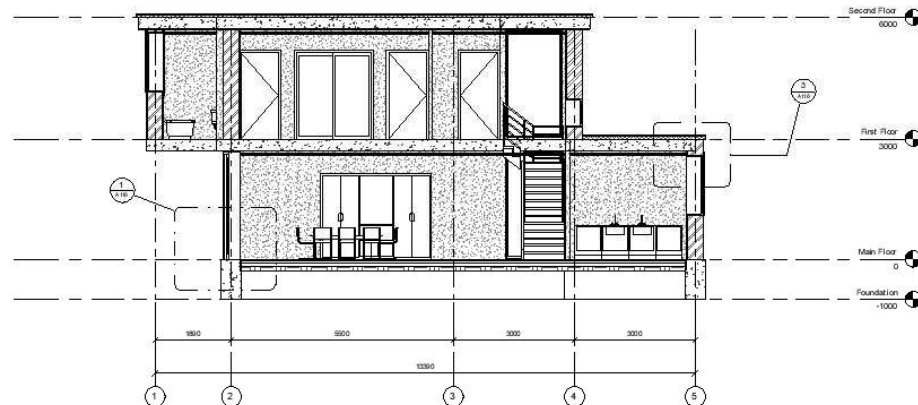
SCALE 1:50 @A1



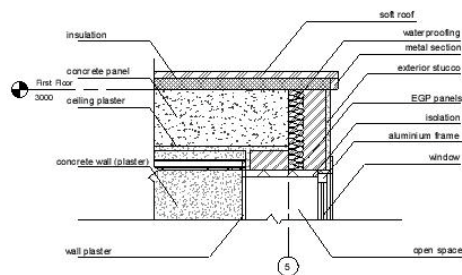
SCALE 1:50 @A1



① Foundation/Floor Section
1:10



② Section A-A
1:50



③ Wall/Roof/Windows Section
1:10

Walls Specification				
Name	Volume	Square	Number	
Foundation 500mm	0.75 m³	2 m²	2	
Foundation 500mm	1.50 m³	3 m²	4	
Foundation 500mm	2.50 m³	5 m²	1	
Foundation 500mm	3.50 m³	7 m²	1	
Foundation 500mm	4.25 m³	8 m²	1	
Foundation 500mm	5.25 m³	11 m²	1	
Foundation 500mm - 10				
Glass Railing 1000mm high (balcony)	0.04 m³	2 m²	2	
Glass Railing 1000mm high (balcony)	0.07 m³	3 m²	1	
Glass Railing 1000mm high (balcony)	0.13 m³	6 m²	1	
Glass Railing 1000mm high (balcony)	0.21 m³	11 m²	1	
Glass Railing 1000mm high (balcony) 5				
Inside Walls 100mm EGP panels	0.38 m³	4 m²	1	
Inside Walls 100mm EGP panels	0.50 m³	6 m²	1	

Walls Specification				
Name	Volume	Square	Number	
Inside Walls 100mm EGP panels	0.62 m³	6 m²	1	
Inside Walls 100mm EGP panels	0.67 m³	7 m²	3	
Inside Walls 100mm EGP panels	0.72 m³	7 m²	1	
Inside Walls 100mm EGP panels	0.73 m³	7 m²	2	
Inside Walls 100mm EGP panels	0.77 m³	8 m²	1	
Inside Walls 100mm EGP panels	1.11 m³	11 m²	1	
Inside Walls 100mm EGP panels	1.13 m³	11 m²	1	
Inside Walls 100mm EGP panels	1.15 m³	11 m²	1	
Inside Walls 100mm EGP panels	1.47 m³	15 m²	1	
Inside Walls 100mm EGP panels	2.18 m³	22 m²	1	
Inside Walls 100mm EGP panels 15 Man				
Exterior wall 420mm	0.88 m³	2 m²	1	
Main Exterior wall 420mm	1.08 m³	3 m²	2	
Main Exterior wall 420mm	1.46 m³	3 m²	1	

Walls Specification				
Name	Volume	Square	Number	
Main Exterior wall 420mm	1.86 m³	4 m²	1	
Main Exterior wall 420mm	1.89 m³	5 m²	1	
Main Exterior wall 420mm	2.06 m³	5 m²	1	
Main Exterior wall 420mm	2.48 m³	6 m²	1	
Main Exterior wall 420mm	2.72 m³	6 m²	1	
Main Exterior wall 420mm	2.78 m³	7 m²	1	
Main Exterior wall 420mm	3.60 m³	9 m²	1	
Main Exterior wall 420mm	3.65 m³	9 m²	1	
Main Exterior wall 420mm	3.78 m³	9 m²	2	
Main Exterior wall 420mm	3.81 m³	9 m²	1	
Main Exterior wall 420mm	3.91 m³	9 m²	1	
Main Exterior wall 420mm	4.00 m³	10 m²	1	
Main Exterior wall 420mm	4.85 m³	12 m²	1	
Main Exterior wall 420mm	4.86 m³	12 m²	1	
Main Exterior wall 420mm	5.07 m³	12 m²	1	
Main Exterior wall 420mm	5.34 m³	13 m²	1	
Main Exterior wall 420mm	6.24 m³	16 m²	1	
Main Exterior wall 420mm	8.12 m³	22 m²	1	
Main Exterior wall 420mm 23				
Wood Beam on the Roof 200mm 200mm 1200mm 26	0.08 m³	0 m²	26	

HOUSE #2 GIDIFA PROJECT Hon Angel Ferdinand Marcos
COPYRIGHT 2016 EGPANEL.COM

SECTION A-A, FOUNDATION/FLOOR SECTION, WALL/ROOF/WINDOWS SECTION, WALLS SPECIFICATIONS

SCALE 1:50 @A1

EGP Housing proposal #2



1959 sqft (182 sqm) 3 bed 3 bath 2 storey

EGP Housing proposal #2



EGP Housing proposal #2



EGP Housing proposal #2



GIDAFI PROJECT
Hon Angel Ferdinand Marcos
House model 4
EGP WALL PANEL

www.EGPANEL.com

EGP Housing proposal #2



EGP Housing proposal #2



E | G | P
Effective Green Panel

GIDIFA PROJECT
Hon Angel Ferdinand Marcos
House model 4
EGP WALL PANEL

www.EGPANEL.com

EGP Housing proposal #3



1264 sqft (117 sqm) 3 bed 3 bath 2 storey

EGP Housing proposal #3





E | G | P
Effective Green Panel

GIDIFA PROJECT
Hon Angel Ferdinand Marcos
House model 5
EGP WALL PANEL

www.EGPANEL.com

EGP Housing proposal #3





Effective Green Panel

GIDIFA PROJECT
Hon Angel Ferdinand Marcos
House model 5
EGP WALL PANEL

www.EGPANEL.com



EGP Housing proposal #3



EGP Housing proposal #3

EGP Housing proposal #3



EGP Housing proposal #4



926 sqft (86 sqm) 3 bed 2 bath 2 storey



Effective Green Panel

GIDIFA PROJECT
Hon Angel Ferdinand Marcos
House model 6
EGP WALL PANEL

www.EGPANEL.com

EGP Housing proposal #4



EGP Housing proposal #4



Effective Green Panel

GIDIFA PROJECT
Hon Angel Ferdinand Marcos
House model 6
EGP WALL PANEL

www.EGPANEL.com



EGP Housing proposal #4



Effective Green Panel

GIDIFA PROJECT
Hon Angel Ferdinand Marcos
House model 6
EGP WALL PANEL

www.egpanel.com

EGP Housing proposal #4



GIDIFA PROJECT
Hon Angel Ferdinand Marcos
House model 6
EGP WALL PANEL

EGP Housing proposal #4



Effective Green Panel

GIDIFA PROJECT
Hon Angel Ferdinand Marcos
House model 6
EGP WALL PANEL

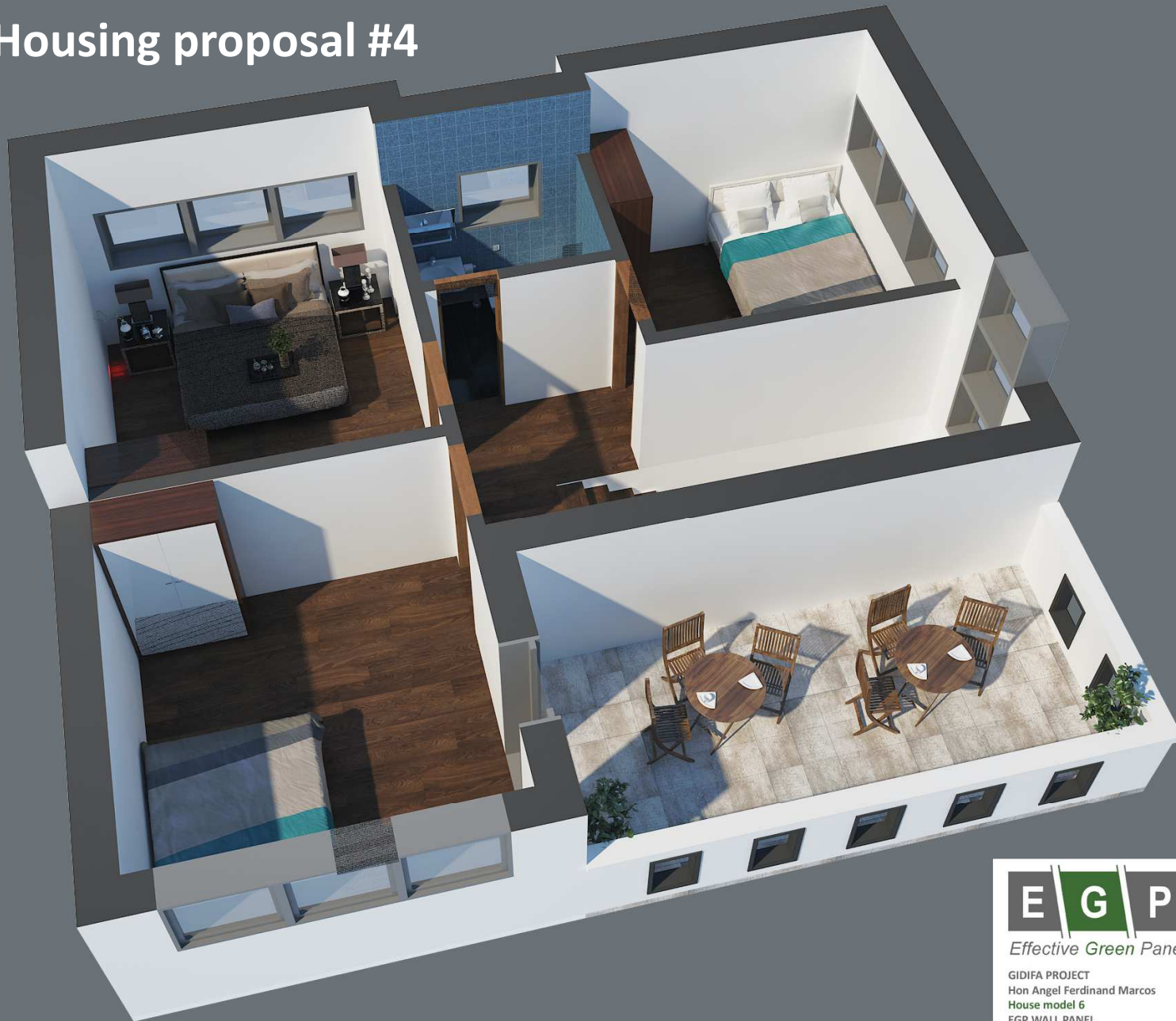
www.EGPANEL.com

EGP Housing proposal #4



GIDIFA PROJECT
Hon Angel Ferdinand Marcos
House model 6
EGP WALL PANEL

EGP Housing proposal #4



EGP Housing proposal #4



Effective Green Panel

GIDIFA PROJECT
Hon Angel Ferdinand Marcos
House model 6
EGP WALL PANEL

www.EGPANEL.com



Effective Green Panel

GIDIFA PROJECT
Hon Angel Ferdinand Marcos
House model 6
EGP WALL PANEL

www.EGPANEL.com

EGP Housing proposal #4



EGP Housing proposal #5



2478 sqft (230 sqm) 4 bed 3 bath 2 storey

EGP Housing proposal #5



Effective Green Panel

GIDIFA PROJECT
Hon Angel Ferdinand Marcos
House model 8
EGP WALL PANEL

www.EGPANEL.com



Effective Green Panel

GIDIFA PROJECT
Hon Angel Ferdinand Marcos
House model 8
EGP WALL PANEL

www.EGPANEL.com





Effective Green Panel

GIDIFA PROJECT
Hon Angel Ferdinand Marcos
House model 8
EGP WALL PANEL

www.EGPANEL.com



E | G | P
Effective Green Panel

GIDIFA PROJECT
Hon Angel Ferdinand Marcos
House model 8
EGP WALL PANEL

www.EGPANEL.com

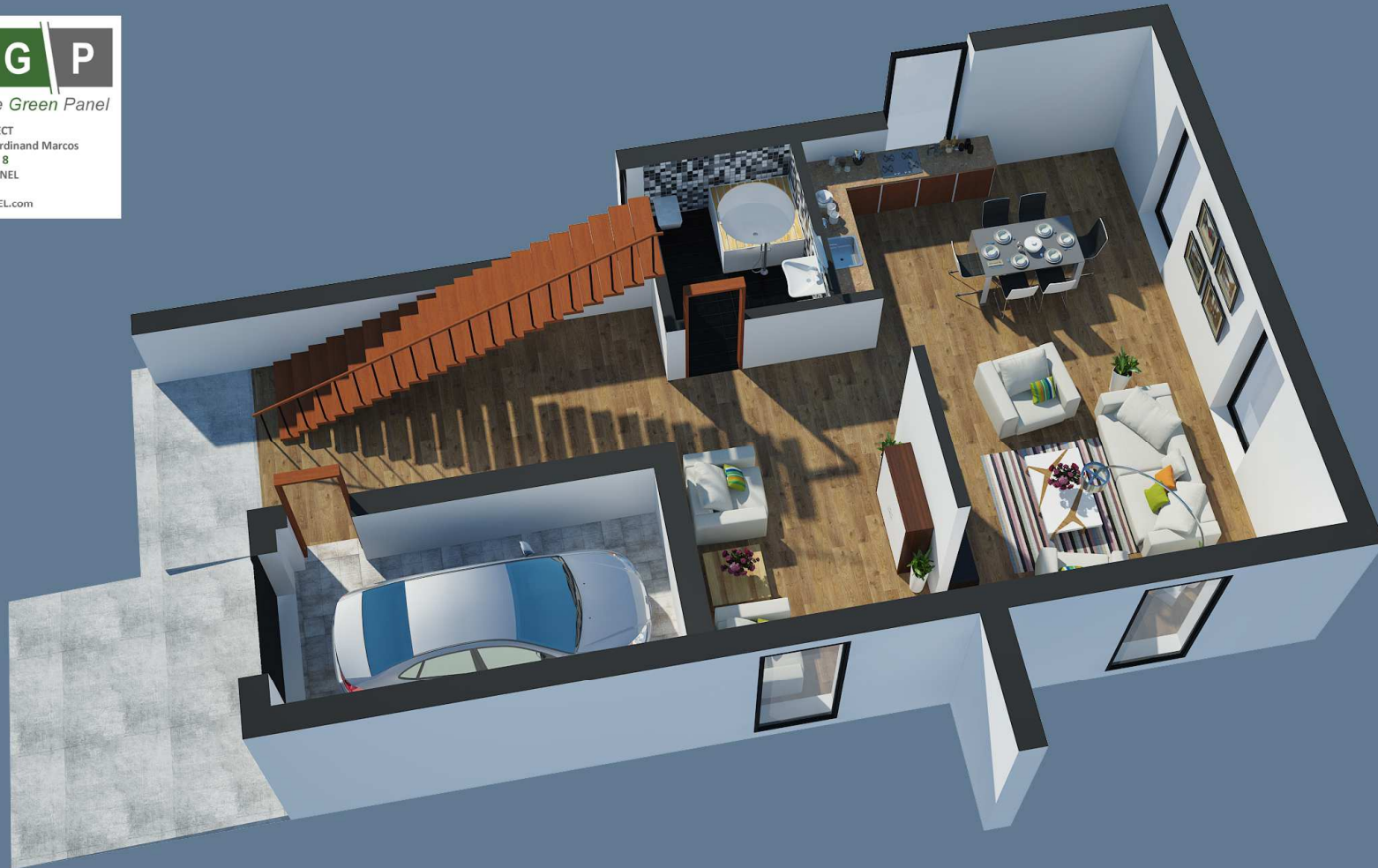
EGP Housing proposal #5



EGP Housing proposal #5



EGP Housing proposal #5



EGP Housing proposal #5



EGP Housing proposal #6



1524 sqft (141 sqm) 3 bed 3 bath 2 storey



GIDIFA PROJECT
Hon Angel Ferdinand Marcos
House model 10
EGP WALL PANEL

www.egpanel.com





Effective Green Panel

GIDIFA PROJECT
Hon Angel Ferdinand Marcos
House model 10
EGP WALL PANEL

www.EGPANEL.com





Effective Green Panel

GIDIFA PROJECT
Hon Angel Ferdinand Marcos
House model 10
EGP WALL PANEL

www.EGPANEL.com



E | G | P
Effective Green Panel

GIDIFA PROJECT
Hon Angel Ferdinand Marcos
House model 10
EGP WALL PANEL

www.EGPANEL.com





Effective Green Panel

GIDIFA PROJECT
Hon Angel Ferdinand Marcos
House model 10
EGP WALL PANEL

www.EGPANEL.com





Effective Green Panel

GIDIFA PROJECT
Hon Angel Ferdinand Marcos
House model 10
EGP WALL PANEL

www.EGPANEL.com





Effective Green Panel

GIDIFA PROJECT
Hon Angel Ferdinand Marcos
House model 10
EGP WALL PANEL

www.EGPANEL.com



EGP Housing materials proposal



Carcass	16mm Melamine-faced chipboard panel, Plywood, Solid Wood
Door Base Material	18mm MDF, Plywood, Solid Wood
Edge Banding	Acrylic Aluminum PVC
Colors	More over Hundreds of colors to choose Melamine face board
Door Surface Finish	Lacquer/Acrylic door panel UV high glossy panel UV color painting panel PVC vacuum panel
Countertop	Acrylic stone , Quartz stone, Natural stone
Size	Standard Size: Base cabinet(H=704mm,D=550mm) Wall cabinet(H=700mm,D=330mm) Non-standard: custom-made as per buy's requirements Environmental friendly Easy to clean and assemble Scratch resistant and corrosion resistant
Features	Moisture-proof Acid and alkali resistant Anti-bacterium



Type: Kitchen Sink

Material: Stainless Steel

Installation Type: Above Counter Top

Sink Shape: Rectangular

Surface Treatment: Polished or Brushed Satin

Faucet Mount: Single Hole

Sink Style: Single Bowl

Thickness: 0.9mm



Surface Finishing:

Chrome

Surface Treatment:

Polished

Installation Type:

Deck Mounted

Number of Handles:

Single Handle

Style:

Traditional

Valve Core Material:

Ceramic

Number of Holes for Installation:

Single Hole

Spray Type:

Pull Down

Function:

Cold & Hot water

Cartridge lifetime:

700,000 cycle times

Guarantee:

5 years

Body Material:

Brass

Water pressure:

0---1.2 Mpa kitchen faucet

Handle Material:

Zinc alloy

Color:

Chrome plated

services:

laser mark, OEM/ODM

Aerator:

Water saving 30%



Power (W):

6200

Voltage (V):

230

Installation:

Built-In

Certification:

CE, EMC, GS, RoHS, SAA/ETL

Surface Material:

Ceramic / Glass

Brand Name:

EGP Kitchen

Model Number:

EGP-CF6201H

Name:

OEM/ODM 6200W 4 zone radiant cooker/
radiant cooktop /radiant hob

Color:

Black

Control:

Touch control/Slide control

Power:

9 levels power setting

Point:

Oval Zone

20'GP/40'GP/40'HQ:

665/1368/1583

Burner:

4 Burners

Glass plate:

Chinese glass/Eurokear glass/Schott



20MX30-L

20L manual solo microwave oven
220-240V/50Hz
700W microwave output power
30min mechanical timer
6 microwave power levels
Turntable glass tray 245mm
Cooking end signal
Defrost setting
Pull handle door
Inox exterior & grey interior
VDE 2 round pin plug



Brand Name:
SMAD/OEM

Power Source:
Electricity
Type:
Bottom-Freezer
Feature:
Compressor

Certification:
CE, RoHS
Fridge Capacity:
190
Freezer Capacity:
78

Power (W):
870
Voltage (V):
220
Dimensions (L x W x H (Inches):
182X57.3X58.3

Item:
built in refrigerator build in type
fridge major appliances
Capacity:
254L
Power Consumption(Annual):
0.866 kWh/24h

Energy Efficiency Class:
A+
Kind of coolant:
R600a
Power Supply:
220~240V,50Hz

Freezing capacity / 24 hours:
3.5kg/24 h
Color:
White
Loading Qty(40HC):
225pcs

Certifications:
CE



Mounting version - Wall Mounted

- 900CFM dual centrifugal blower
- Six-speed electronic, touch sensitive control panel with LCD display
- Delayed power auto shut off (programmable 1-15 minutes)
- 30 hours cleaning reminder
- Two dimmable 35w halogen lights (GU10 type light bulbs)
- Three aluminum 6 layers micro-cell washable grease filters (dishwasher-friendly)
- Heavy duty 19 gauge stainless steel (brushed finish)
- Telescopic decorative chimney of variable dimension
- 6" round duct vent exhaust and back draft damper
- Venting Mode: Duct (optional re-circulating kit available for ductless)
- For residential use only, one-year limited factory warranty

Model#SV218Z-30

Specifications:

Body	Stainless Steel
Power Rating	120V / 60Hz (USA & Canada standard) or 220V / 50Hz
General Input	288 W (218W + 2x35W)
Motor Input Power	218 W
Motor Revolution	600 RPM (±10%) to 1800 RPM (±10%)
Levels Of Speed	6 Levels
Maximum Airflow	900 CFM
Air Pressure	320 pa
Noise Level (dB / sone)	Approximately 23 / 0.3 to 68 / 7.0 (Lowest to highest Speed)
Motor Type	Dual Chamber Ultra Quiet
Fan Type	Dual Centrifugal / Sirocco
Control Type	Electronic Control Panels with LCD Display
Filtration Type	Aluminum Filter with Reversible Handle
Illumination	35W Dimmable GU10
Venting Size	6 inch Round
Interference Protection	Radio Frequency Interference Protected

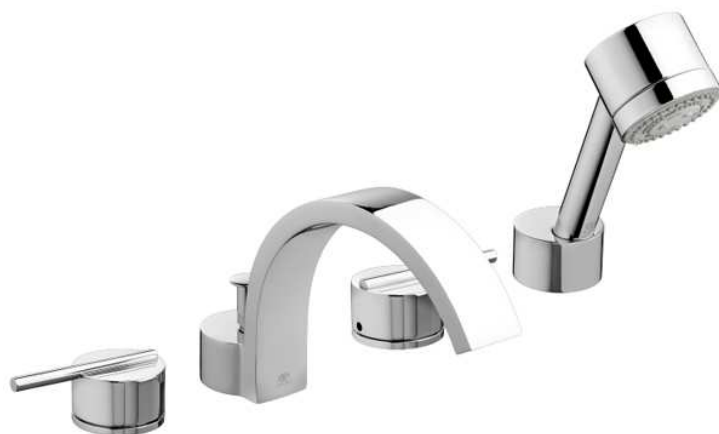


acrylic bathtub
fiber reinforced
with or without non-slip
high quality and modern design
ideal price

Pure acrylic material warm to touch and easy to clean
High gloss and fade resisted
Acrylic sheet = 3mm
Glass fiber = 3mm
Wood strengthen on the bottom
With panel or foot system as request
Package: Plastic covered on each piece then packed into carton,
several pieces on pallet
High hardness, wear resistance, excellent surface brightness, high
plasticity, high quality

The following sizes available

1000X1000X400mm
1100X1100X400mm
1250X1250X400mm
1300X1300X400mm
1350X1350X400mm
1400X1400X400mm



Type

Modern bathroom brass triple handle upc bathtub waterfall faucet

Number of handles

Dual handle

Material Brass body and Zinc handle

Function

Cold/hot water

Cartridge Ceramic cartridge, 500,000 life cycle test

Working pressure

0.05-1.6Mpa

Seal test

1.6±0.05Mpa and 0.05±0.01Mpa, keep 1 min, no leakage

Flow rate ≤8.3L/min

Hose Stainless steel flexible hose. G3/8 or 9/16, G1/2

Finishing Chrome finishing, Brush nickel is available

Plating Acid salt spray test ≥ 24 or 48 hours

Plating thickness Chrome ≥ 0.2μm, nickel ≥ 8μm Or per your request

Certification ISO9001:2008, ISO14001, cUPC, NSF, AB1953.

Watersense

After-sales service 5 years warranty



Tray Material:

ABS

Type:

Shower Cabins

Frame Style:

With Frame

Frame Material:

Aluminium

Frame Surface Finishing:

Electroplate

Glass Thickness:

5MM

Open Style:

turn

Tray Shape:

Round

size:

90x90x215cm

aluminium profile color:

satin

glass color:

transparent

glass thickness:

5MM

backwall:

glass

trolleys:

single

Bathtub:

15cm height ABS

certificate:

CE & RoHS



Material:
Ceramic
Type:
Pedestal Sinks
Basin Shape:
Oval

Faucet Mount:
Other
Special Application:
Shampoo Sinks
Color:
Pure White

Usage:
Bathroom Furniture
Certification:
UPC
Installation:
Floor Mounted

Style:
Modern Desgin
Shape:
Round Ceramic Washbasin
Packing:
Carton Packing

Finish:
Glaze



Style:
Modern
Type:
Mirrored Cabinets
Carcase Material:
Cold roll steel and silver mirror

Style:
LED illuminated Bathroom Mirror Cabinet
Material:
Cold roll steel and silver mirror
Surface:
White finish

Size:
380x510x110/mm
Included:
2 pcs shelves, 3 tiers
Package:
brown box

N.W/PC:
8.85kg
G.W/PC:
10.09kg



Material:
Wood
Wood Style:
Solid Wood
Wood Type:
Oak

Appearance:
Modern
Style:
Soft Bed
Folded:
No

Inflatable:
No
Size:
Double

Brand Name:
DESC
Model Number:
01
Usage:
bedroom

Colour:
Customized
Weight:
60kg
CBM:
1.0

Packing:
5pcs/ctn
Quality Grade:
Top grade double wooden bed
Competitiveness:
High quality



Name: wardrobe

Material

Europe E1 standard Melamine finished MDF& Chip board.

Environment friendly

Moisture-proof, Heat-proof, Scratch-proof

Carcass

18mm Chip board, PVC edge bending

Back Board 5mm Chip board, etc

Color

Customized color or you can choose from our standard color

Accessory

Drawers

Drawer Basket

Tie rack

Trouser rack

Hangerob

Function Hardware

1. Rattan/Cane basket;
2. Wire basket;
3. Cloth-hanging pipe;
4. Lights of clothes-hanging pipe;
5. Up-down clothes hanging rack;
6. Mirror; tie rack; Trousers rack;
7. Wire basket with glass front;
8. Storage rack; Metal wire rack;
9. Underwear rack; Shoes rack;
10. Other Decoration

Door Type

Sliding door with aluminum frame .

Swing door PVC EDGE (Economical) ,

Swing door Aluminum Frame

Folding door ,

Open shelves

Door Surface treatment

Melamine MFC ,

MDF with UV , PVC , Lacquer and Acrylic



Material:
Ceramic
Structure:
One Piece
Installation Type:
Floor Mounted, Floor Mounted

Feature:
Dual-Flush
Drainage Pattern:
S-Trap
Flushing Method:
Siphon Flushing

Toilet Bowl Shape:
Other

Product Name:
european one piece toilet
Quality Level:
A Grade

Application:
Bathroom
Style:
Modern european one piece toilet
Seat cover:
Soft Closing Cover Seat

Package:
Standard Exported 5 ply Carton Packing,
Customized
Quality Guarantee:
3 Years



Material:
Ceramic
Type:
Countertop Sinks
Basin Shape:
Oval

Faucet Mount:
Single Hole
Special Application:
wash
model:
GT-422 hand wash basin

color:
white and ivory
quality:
high
price:
Best

design:
modern
size:
630*490*200mm
carton size:
650*510*220mm

N.W:
13kg
G.W:
14kg



Product name
Modern glass coffee table with high gloss MDF for living room

Material
Top:8mm Tempered glass

Bottom:White glossy MDF

Frame:MDF

Weight
N.W. 29kg
G.W. 31kg

Size
1100*600*420mm

Volume
0.075CBM

Color
White+Black/Customer requirements





Product Name Dining table

Material

201# stainless steel and 20 mm sticker marble

Packing & Transit

Disassembly, carton, wooden

frame for marble

Color

any color

Size

L1500*W900*H750*20mm

Disassembly

or not

Yes

CBM 0.19 m³ Packing 1pc/3ctns

N.W/G.W 100kg/103 kg



Products laminate floating flooring

Code No. Oak

Size 1218X197X8.3mm

Surface Real Wood Grain

Quality AC4 with HDF

Colors e-mail me to get e-catalogue, any color available for you

Lock Click Unilin Click

Size

Length: 1218mm, 810mm, 600mm

Width: 92mm, 105mm, 130mm, 149mm, 170mm, 197mm, 300mm, 400mm

Thickness: 7mm, 8mm, 10mm, 11mm, 12mm

Surface:

EIR, High Glossy, Handscraped, Real Wood Grain, Matt, Wood Grain, Middle Emboss. small Emboss, Crystal.

Groove: Non Groove, U-Groove, V-Groove.

Waterproof: Wax or Non wax

Click: Single, double, and Unilin Click.

Wear Resistance Grade: AC1, AC2, AC3, AC4

Material: High Density Fibre

Colors: Any color available for you. freely select from our catalogue



name Customized Hotel Velour Carpet Flooring

material 100% polyester

WEIGHT(G/SQM)

400G/SQM,450G/SQM,500G/SQM,550G/SQM,600G/SQM,
650G/SQM,700G/SQM

size length:15-60m width:1-4m



Light Source:
LED
Item Type:
Spotlights
LED Light Source:
CREE, EPISTAR

LED chip:
CREE, EPISTAR
Base Available:
MR16, GU10, E27
Light Color:
Cool White, Warm White, pure white

Beam Angle:
30/45/60/90 degrees
Size:
50x50mm
CCT:
2,700K-7,000K

Optical efficiency:
80%
Working humidity:
10 to 95%
PF:
>0.95

LED Qty:
3 pcs

Warranty(Years):
3
Input Voltage(V):
AC/DC 12V
Lamp Power(W):
3

Lamp Luminous Flux(lm):
270
Lamp Luminous Efficiency(lm/w):
90
CRI (Ra>):
0.8

Color Temperature(CCT):
Warm White
Working Temperature(°C):
-20 - 40
Working Lifetime(Hour):
50.000
Lamp Body Material:
Aluminum
Certification:
C-tick, CCC, CE, CQC, EMC, Energy
Star, ETL, FCC, LVD, PSE, RoHS,
SAA, UL, VDE
Base Type:
MR16

EGP Electric switches



Product Name
Modern light switch 110-250V

Material
4mm alluminum and toughened glass panel, 1.35mm iron frame and PC base

Load power
3-800W/gang, total 2000W

Work temperature
-20°C-70°C

Mechanical Life
100,000 on-off times

Panel size
86*86mm available

Capability allowance
-15%~+10%

Base
round base



Open Style:

Swing

Position:

Interior

Surface Finishing:

Finished

Type:

Entry Doors

Door Material:

MDF

Color:

Diversified Available

Surface treatment:

Coating painting

material:

MDF panel with solid wood skeleton round

Size(H*W*T):

2050*600 to 900* 35 to 5mm



Profile 1.CE6063-T5/T6thermal break aluminum profile(heat insulation)
2.CE6063-T5/T6 standard aluminum profile
3.UPVC/PVC profile(Conch,LG,Koemmerling,VEKA Brand)
4.aluminum cladding wood profile

Glass 1.Single toughened(tempered) glass 4/5/6/8/12(mm)
2.Double Glazed:5+9A+5mm,5+12A+5mm,6+19A+6mm
3.Laminated glass:5+0.38PVB+5mm,5+0.76PVB+5mm
4.Tinted lowe glass,Obsucre glass,reflection glass
Self-cleaning glass,Art glass

Hardware 1.China Brand:KIN LONG,YAHR, CHUGN
2.German Brand:ROTO,SIEGENIA,HOPPE
3.Italy Brand:ALUK,SAVIO,GIESSE

Profile Aluminum:powder coating,Anodized, Electrophoresis,
Wood grain
UPVC/PVC:Coextrusion,laminating,embossed
Sealing PVC & EPDM rubber strip,silicone sealant, wool piled pipe



1. Product Name: Aluninum Window
 2. Aluminium Profile: 65JL
 3. Deflection/span ratio: Serviceability design wind pressure 800Pa, Rating N4(general)
 4. Operating force: Force to initial movement 22N, force to maintain movement 37N
 5. Air infiltration: Average air leakage rate 0.53L/s.m2
 6. Water penetration: Rating N4(exposed), test pressure 300pa
 7. Ultimate strenght: Rating N4(general), test pressure 2000pa
- Fly screen
Stainless steel /Aluminium/Fiberglass/Retractable & invisible
Frame
Thermal break alunimiun alloy
Glazing
Double tempered low-e glass
Standard
AS2047,AS1288,AWA,WERS,CE
Hardware
Germany brand/local brand--Hopon, Kinlong, Siegenia...
Profile Frame
6063-T5/T6 /PVC
Feature
Energy saving; 3 star, used for green house, used for prefab house



Effective Green Panel



EFFECTIVE GREEN PANEL

Churchill Towers ,3710/11,
Business Bay, Dubai, UAE

☎ +971 4 4213415

📠 +971 4 4213416

✉ info@egpanel.com

🌐 www.egpanel.com